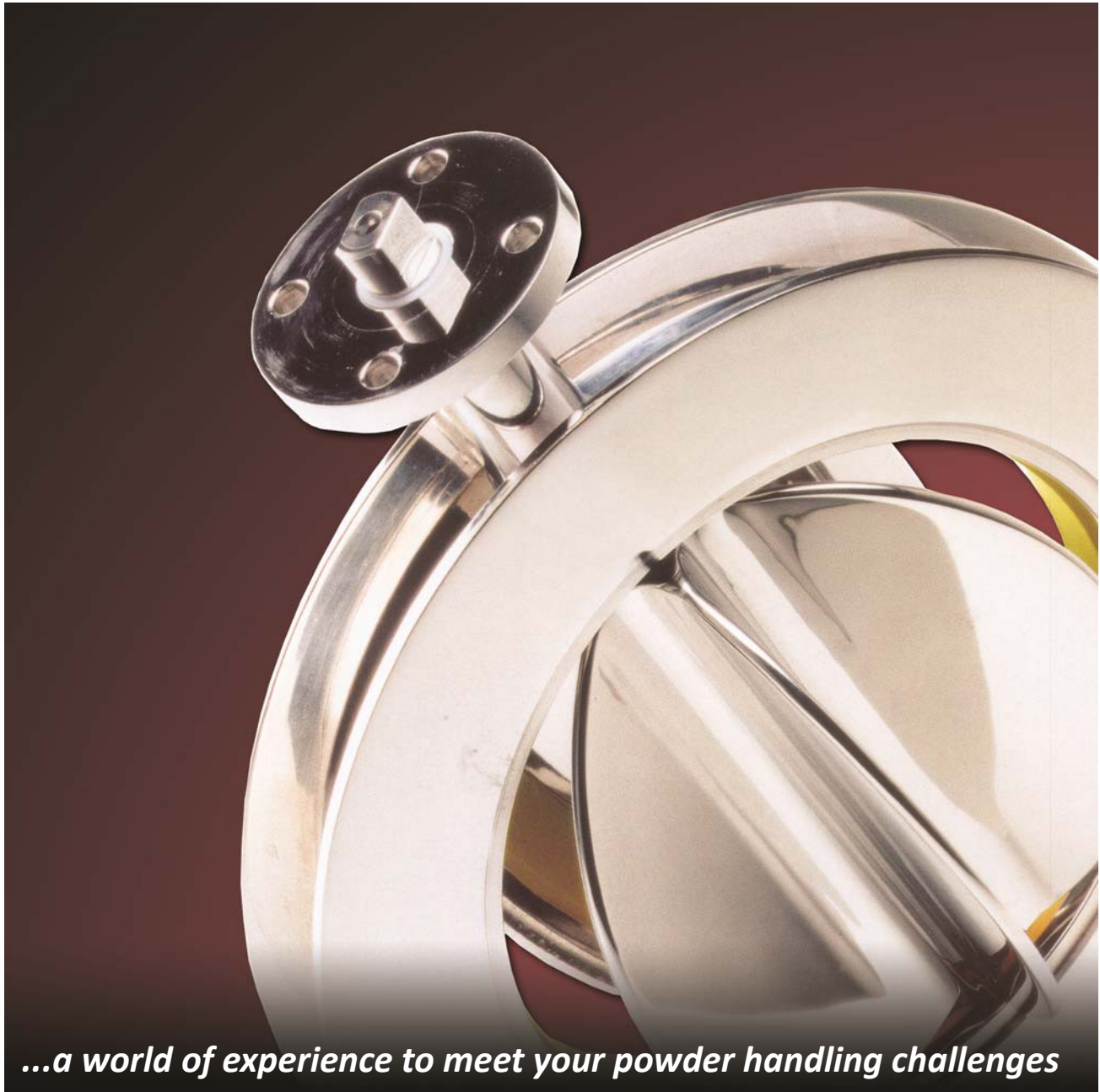


Feeders & Valves



Industrial Equipment & Design Company

Feeders & Valves

An integral part of many powder handling systems is the “feeder” or valve to provide the controlled feed of product into the process. Our valve choice is dictated by the needs of the project and we offer a variety of different options, but our standard valves fall under three main styles:

- **Butterfly Valves**
 - **Rotary Valves**
 - **Tablet Valves**
-

Butterfly Valves

The **BUTTERFLY VALVE** sets the standard in hygiene and cleanliness for the handling of powders, granules, pastes, liquids and gases in the hygiene conscious industries.

The **BUTTERFLY VALVE** offers superior quality coupled with the latest design and technology available for a butterfly valve.

The product range also includes connection systems between different processes. Sealing against pressure and vacuum - Quick release by "CLAMP" - Very light and thin - Available with manual handle or with pneumatic actuators in sizes from 4" to 12" with standard sanitary ferrule connections.



Rotary Valves

The **ROTARY VALVE** allows continuous feeding of granules and powders without flow obstruction. Its use is ideal for feeding of: mills, tablet press machines, capsule filling machines, micro-dosing machines, sieving machines. A 6 pocket rotor (8 on request) turns back and forth introducing a uniform quantity of product.

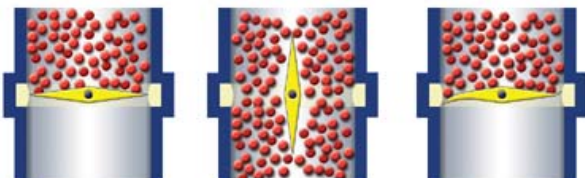
The **ROTARY VALVE's** unique design provides a flow control system in far less space and with smallest dimensions than conventional star valves.

The **ROTARY VALVE** has been developed to provide uniform dosing of product. Its star configuration and its movement (alternating 180 degrees in one direction and 180 degrees in the other direction) supplies product and transfers it into the machine below by keeping above that contained in the feeding receiver. The reciprocating movement prevents separation. The operation of the valve movement can be regulated as required and, with the proper controls, can be used as an accurate batch feeder.



Tablet Valve

The **TABLET VALVE** offers an ideal solution for handling capsules, tablets, pills, silicone caps, etc... Its silicone coated disc allows opening and closing of the valve without any damage to the product

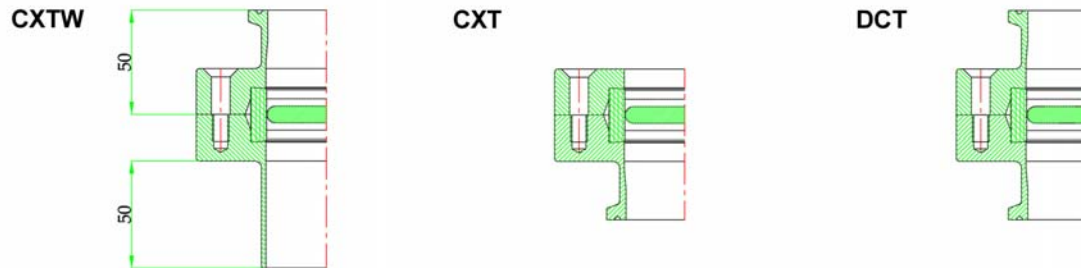


The **TABLET VALVE** vane is silicone coated and its outer surface is flexible. This allows opening and closing of the valve without damaging the product.

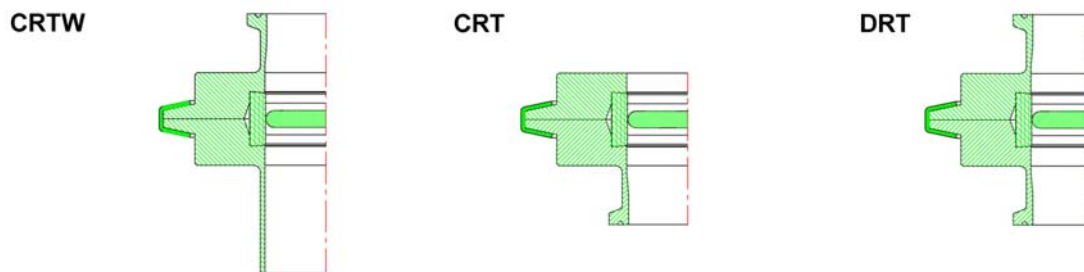


Valve Assembly Types

Bolt Together Models (w/stainless steel bolts)

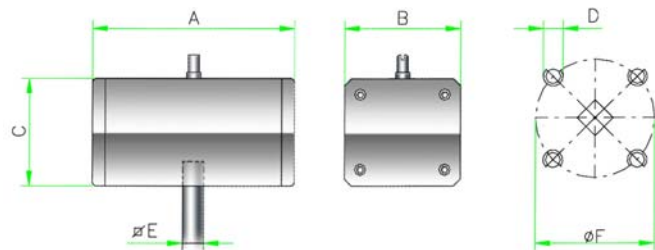


Clamp Together Models (w/stainless steel clamp)



Control Systems

Pneumatic Actuator

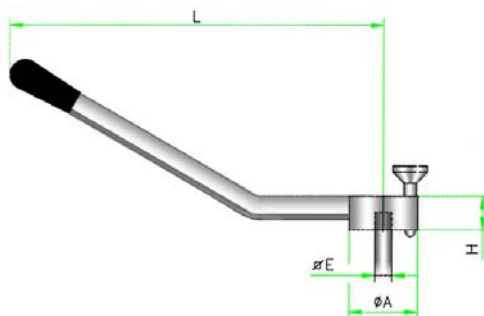


Materials Available:

Anodized Aluminum (standard)
Stainless Steel

USD	DN	Model	A	B	C	D	E	F
4"	100	APM1	164	75	66	M5	11x11	42
6" : 8"	150 : 200	APM2	199	90	81	M6	11x11	50
10"	250	APM2	199	90	81	M6	14x14	50
12	300	APM3	258	110	100	M8	17x17	70

Sanitized Manual Handle (stainless steel w/ self-locking mechanism)

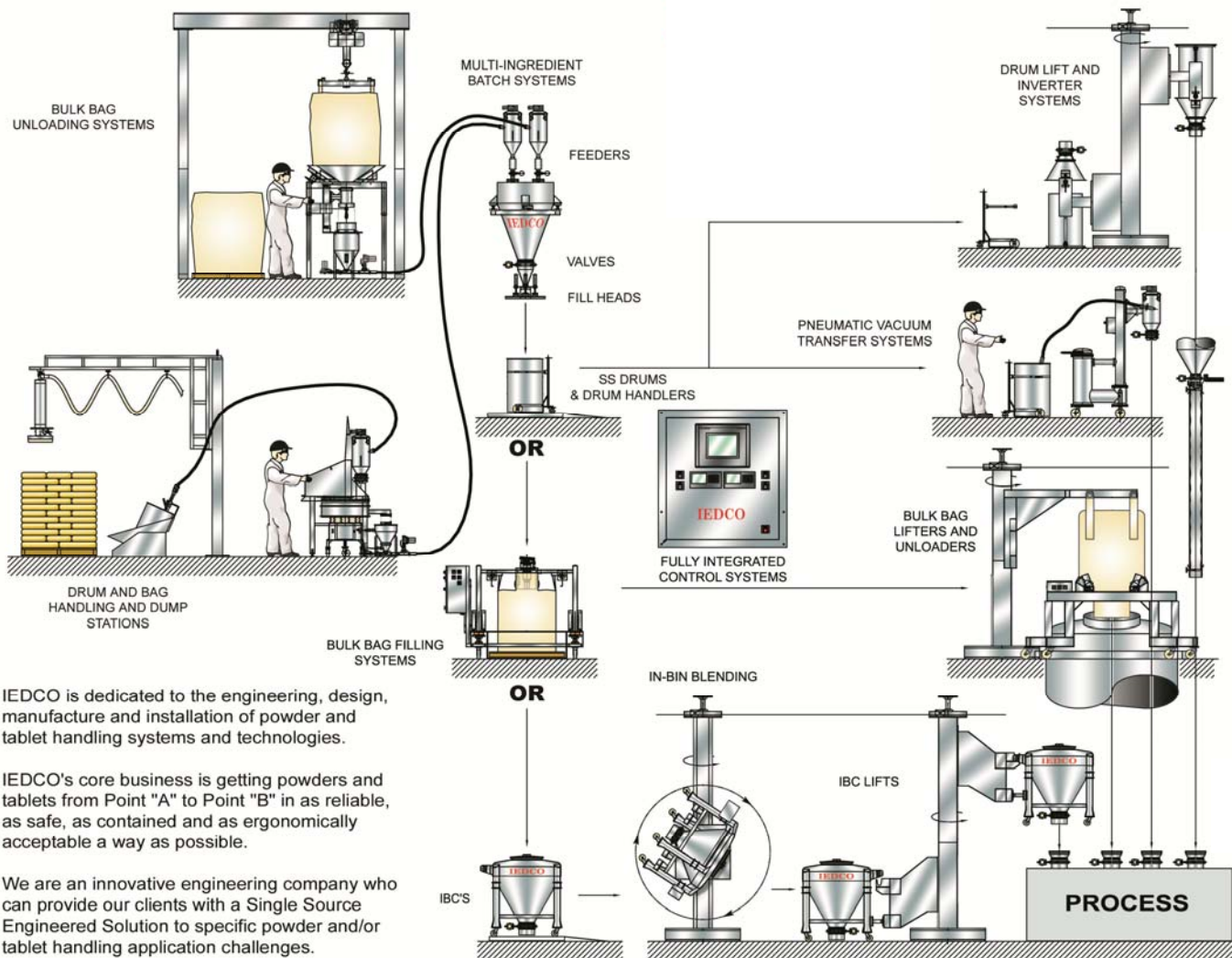


USD	DN	A	E	H	L
4"	100	50	11	24	240
6"	150	50	11	24	295
8"	200	50	11	24	295
10"	250	50	14	24	340
12"	300	50	17	24	380



...a world of experience to meet your powder handling challenges

Getting Powder & Tablets From Point "A" To Point "B" Is Our Only Business



IEDCO is dedicated to the engineering, design, manufacture and installation of powder and tablet handling systems and technologies.

IEDCO's core business is getting powders and tablets from Point "A" to Point "B" in as reliable, as safe, as contained and as ergonomically acceptable a way as possible.

We are an innovative engineering company who can provide our clients with a Single Source Engineered Solution to specific powder and/or tablet handling application challenges.